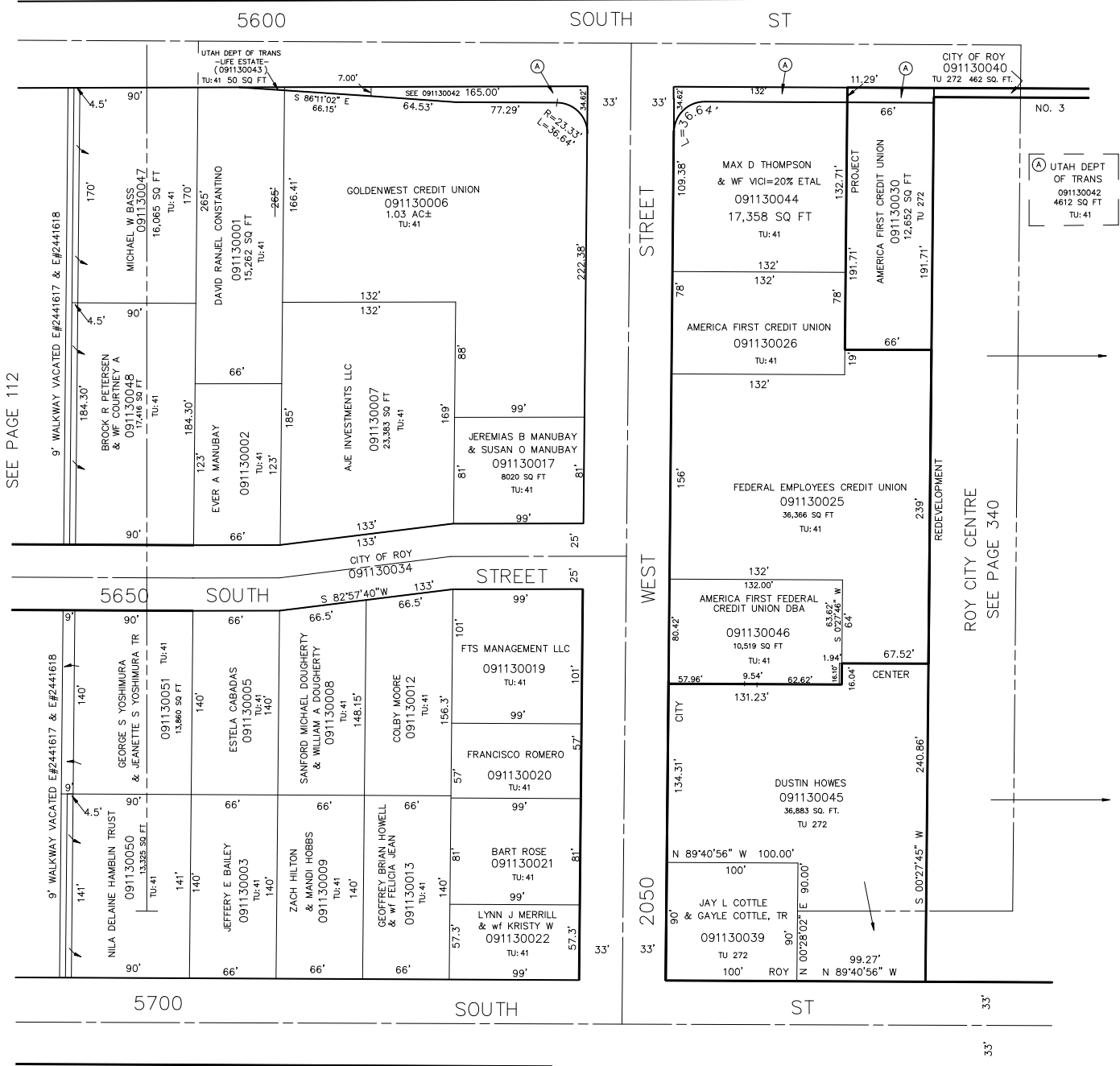


N.W. 1/4 OF N.E. 1/4 OF N.E. 1/4 OF  
SECTION 23, T.5N., R.2W., S.L.B. & M.

IN ROY CITY  
SCALE 1" = 60'

TAXING UNIT: 41, 272

SEE PAGE 1



SEE PAGE 112

ROY CITY CENTRE  
SEE PAGE 340

SEE PAGE 95